

C16M...

Weighing module
for 20 t ... 200 t

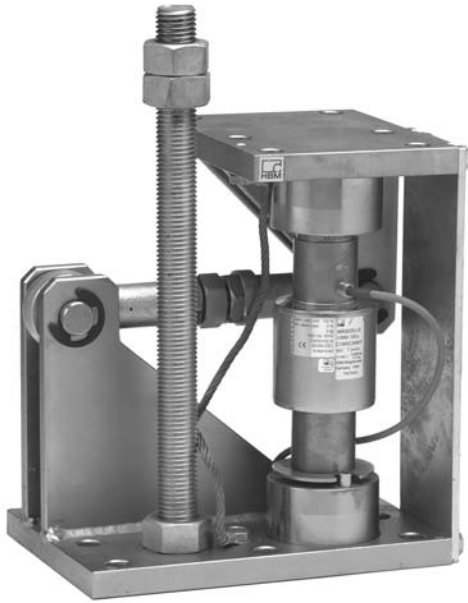
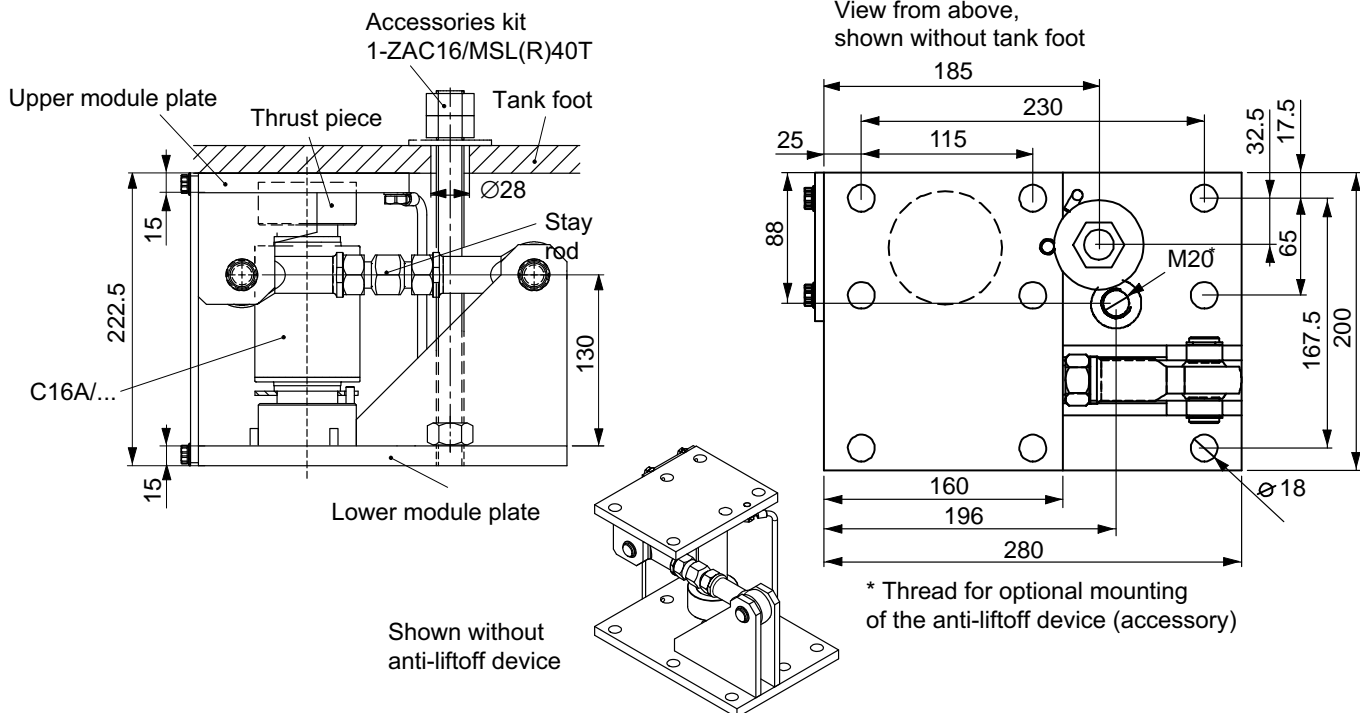


Fig. with accessories kit 1-ZAC16/MSL60T

Special features

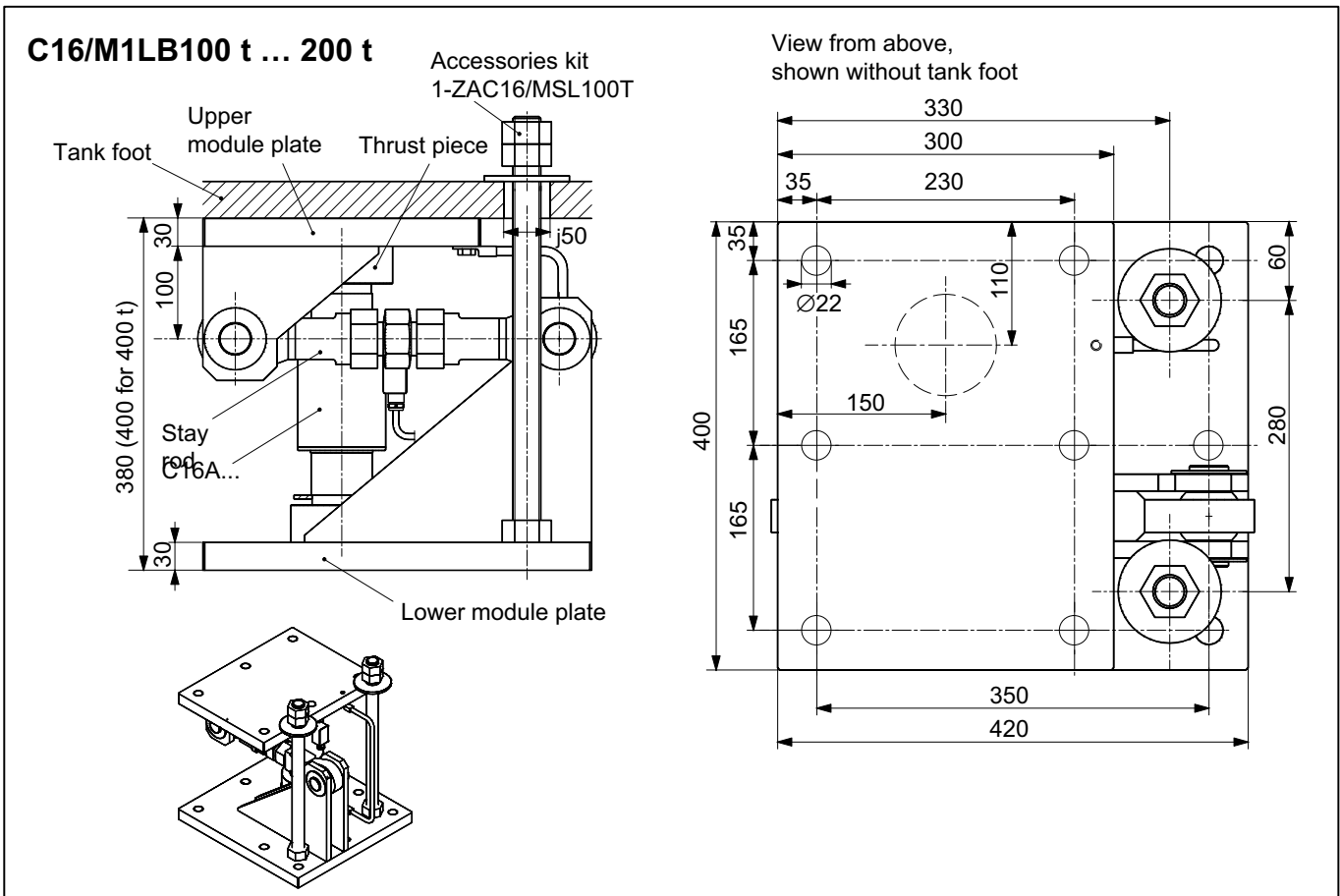
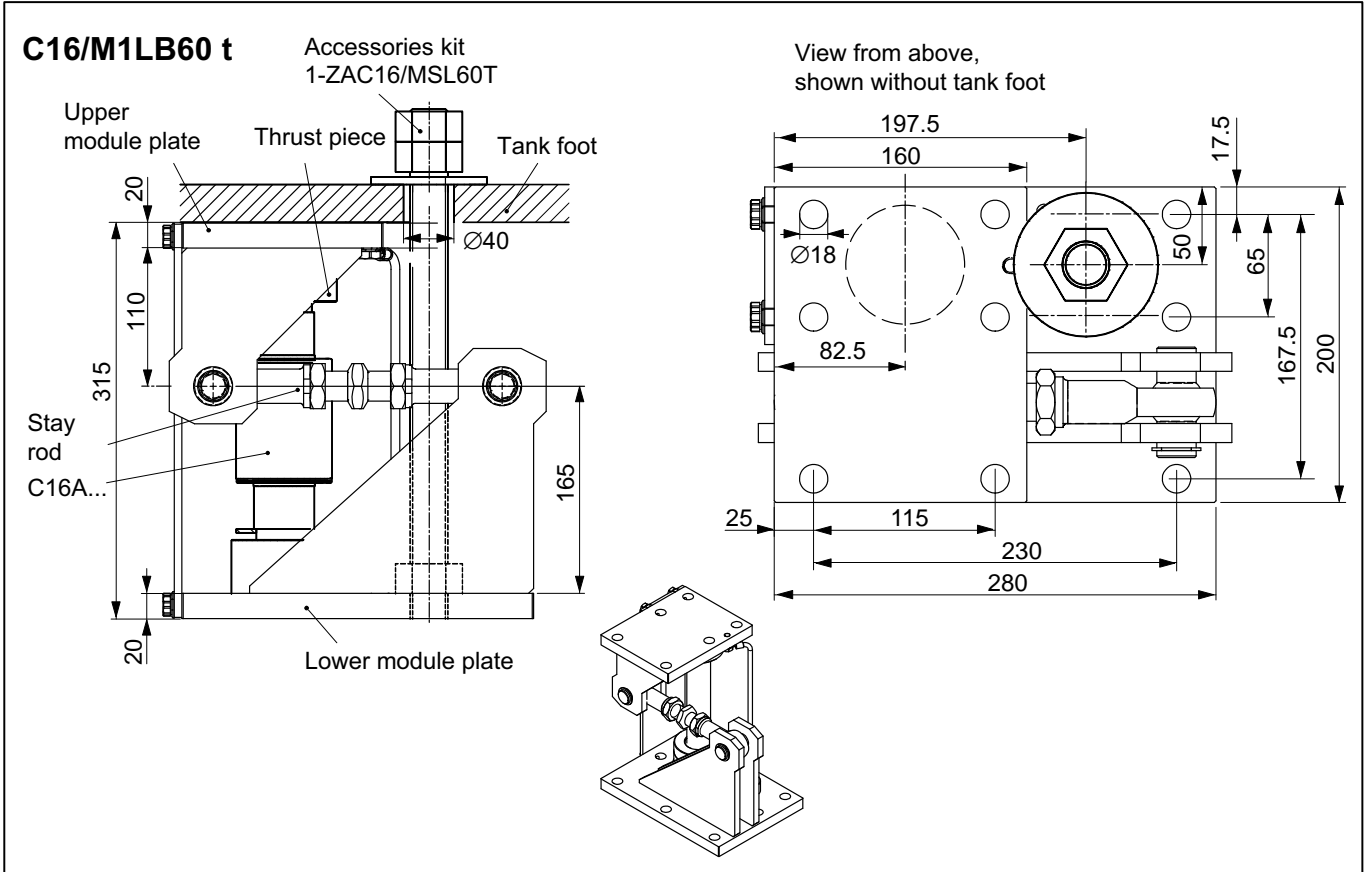
- Equipped with a self-restoring C16 pendulum load cell of class D1, C3 or C4 according to OIML R60
- Stay rod for taking up horizontal forces
- Can be fitted with an anti-liftoff device (see Accessories)
- Maintenance-free
- Minimal construction height for space-saving installation
- Easy mounting
- Two versions available:
 - Galvanized
 - Stainless steel
- Explosion protection versions as per ATEX and IECEx, FM (US) (optional)

C16/M1LB20 t ... 40 t



Dimensions (in mm; 1 mm = 0.03937 inches)

Dimensions (in mm; 1 mm = 0.03937 inches)



Specifications of the C16M... weighing module

Maximum capacity	t	20	30	40	60	100	200
Limit load	% of maximum capacity	150					
Restoring force (at 1 mm lateral displacement transverse to the stay rod direction)	% of applied load	0.49	0.76	0.94	0.52	0.48	0.81
Max. permissible lateral displacement transverse to the stay rod axis	mm	± 4.0			± 5.0		
Max. permissible horizontal force in the stay rod direction	kN	50		100		150	
Max. permissible liftoff force (when using an anti-liftoff device ¹⁾)	kN	80		120		240	
Material		Galvanized or stainless steel ²⁾					
Weight, approx. (version-dependent, including load cell)	kg	20		55		105	

¹⁾ The anti-liftoff device, e.g. a threaded rod (see Accessories), can be screwed into the threaded hole provided.

²⁾ As per EN 10088-1.

For more information on the corresponding load cells, see the C16A... data sheet

Options for C16M

- **Explosion protection versions as per IECEx, ATEX and FM (US)**

AI1/21 IECEx+ATEX zone 1/21 + FM intrinsically safe, II 2G Ex ia IIC T6/T4 Gb, II 2D Ex ia IIIC T125°C Db*

AI2/21** IECEx+ATEX Zone 2/21 not intrinsically safe, II 3G Ex ec IIC T6/T4 Gc, II 2D Ex tb IIIC T125°C Db*

* With EU type examination certificate (BVS13ATEX E 108 X) and IECEx Certificate of Conformity (IECEx BVS 13.0109 X)

** Option AI2/21 IEC + ATEX zone 2/21 includes zone 2/22

- **Overvoltage protection**
- **Cable length 20 m (maximum capacity (E_{max}) = 20 t + 30 t)**
- **Cable length 40 m (maximum capacity (E_{max}) = 20 t ... 100 t)**
- **20 m cable with braided wire (maximum capacity (E_{max}) = 20 t ... 60 t)**


Placing orders

When placing an order please specify the ordering numbers from the tables. If you need other versions (accuracy classes, explosion protection, other cable lengths or materials, overvoltage protection, etc.) for the available products, please look in the overview "C16 modules (including the C16A... load cell), optional versions". You can generate a specific ordering number there from your individual requirements.

Product numbers for the C16/M1LB modules (incl. the C16A... load cell), preferred types

Type	C16/M1LB
Material	Galvanized
Accuracy class	D1 (OIML)
Maximum capacity	Order no.
20 t	1-C16/M1LB20T
30 t	1-C16/M1LB30T
40 t	1-C16/M1LB40T
60 t	1-C16/M1LB60T
100 t	1-C16/M1LB100T
200 t	1-C16/M1LB200T

C16 modules (including the C16A... load cell), optional versions

Order no.	
K-C16M	
Code	Option 1: Material
V	C16/MSL (galvanized)
R	C16/MSLR (stainless) [only with option 3 = 20 / 30 / 40]
Code	Option 2: Accuracy class
D1	D1 (OIML) [only with option 3 = 20 / 30 / 40 / 60 / 100 / 200]
C3	C3 (OIML) only with option 3 = 20 / 30 / 40 / 60 / 100]
C4	C4 (OIML) [only with option 3 = 30 / 40 / 60]
Code	Option 3: Maximum capacity
20	20 t [only with option 2 = D1 / C3]
30	30 t [only with option 2 = D1 / C3 / C4]
40	40 t [only with option 2 = D1 / C3 / C4]
60	60 t [only with option 2 = D1 / C3 / C4]
100	100 t [only with option 2 = D1 / C3]
200	200 t [only with option 2 = D1]
Code	Option 4: Explosion protection
N	No Explosion protection
AI1/21	IECEX + ATEX Zone 1/21 and FM 
AI2/21	IECEX + ATEX Zone 2/21
Code	Option 5: Cable length
S12	12 m (standard) [only with option 3 = 20 / 30]
S20	20 m (standard) [only with option 3 = 40 / 60 / 100 / 200]
20	20 m [only with option 3 = 20 / 30]
40	40 m
20M	20 m with metal braiding [only with option 3 = 20 / 30 / 40 / 60]
Code	Option 6: Other
N	Without
L	With overvoltage protection
i	With C16i load cell (digital load cell) [only with option 2 = C3, option 3 = 20 / 30 / 40 / 60, option 4 = N]

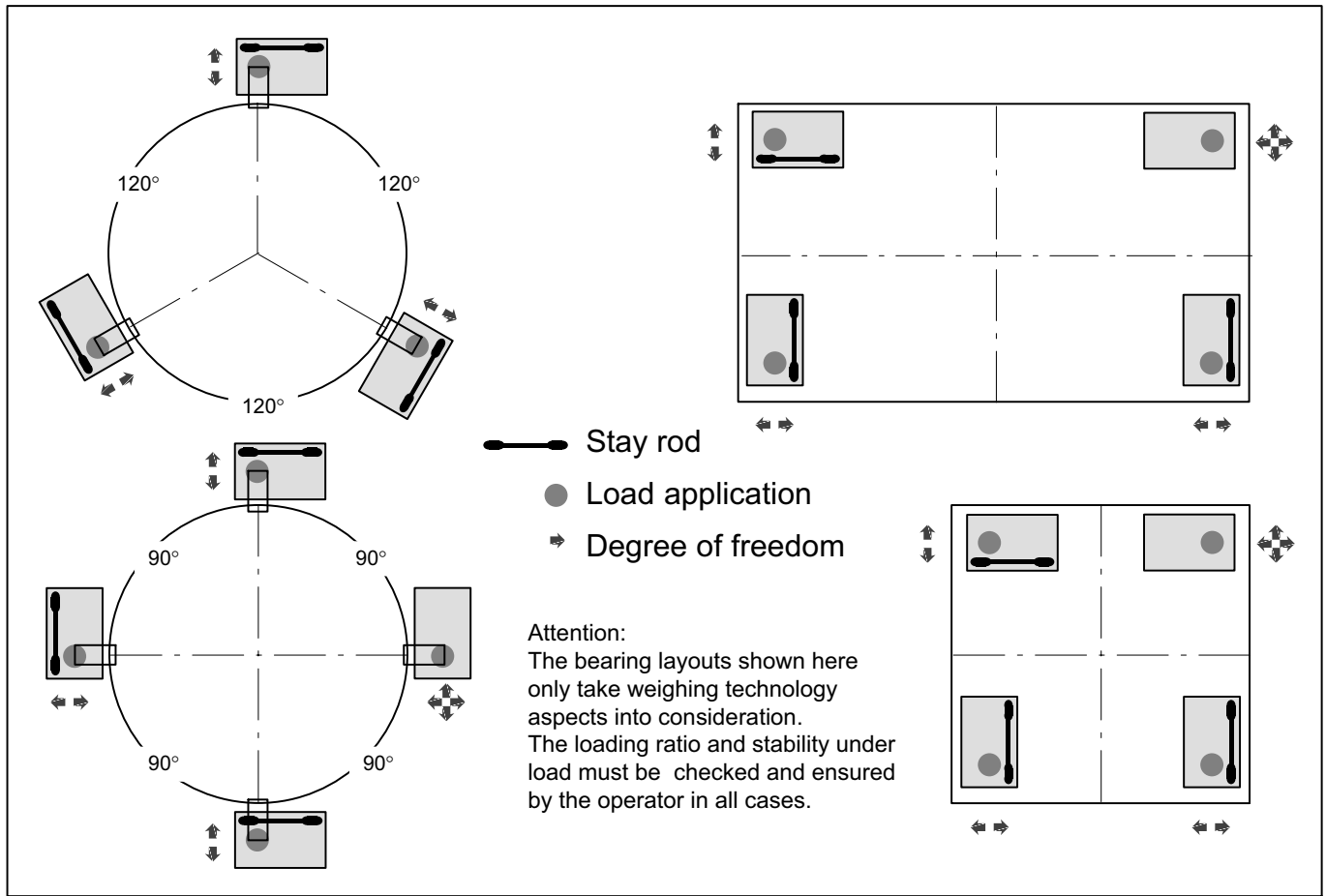
K-C16M - - - - - - - -

Not all codes can be combined with one another. Take note of the conditions in square brackets!

Scope of supply

Fully-assembled weighing module with stay rod, thrust pieces, ground cable and C16A load cell

Installation examples for weighing modules with stay rods



Accessories (to be ordered separately) each for **two** weighing modules (see dimensions):

1-ZAC16/MSL40T, for C16/MSL20 t ... 40 t, comprising:

- 1 threaded rod M20x1000¹⁾, **galvanized**
- 6 hexagon nuts M20 DIN 934, galvanized
- 2 washers DIN 9021, Ø21 mm, galvanized

1-ZAC16/MSLR40T, for C16/MSLR20 t ... 40 t, comprising:

- 1 threaded rod M20x1000¹⁾, **stainless**
- 6 hexagon nuts M20 DIN 934, stainless
- 2 washers DIN 9021, Ø21 mm, stainless

1-ZAC16/MSL60T, for C16/MSL60 t, comprising:

- 1 threaded rod M30x1000¹⁾, **galvanized**
- 6 hexagon nuts M30 DIN 934, galvanized
- 2 washers DIN 9021, Ø31 mm, galvanized

1-ZAC16/MSL100T, for C16/MSL100 t ... 200 t, comprising:

- 4 threaded rods M30x1000¹⁾, **galvanized**
- 12 hexagon nuts M30 DIN 934, galvanized
- 4 washers DIN 9021, Ø31 mm, galvanized

¹⁾ The customer must adapt the threaded rods to the particular installation situation.

Further accessories



C16 fixed bearing with same installation height as the module. Further information can be found in a separate data sheet.

Subject to modifications.
All product descriptions are for general information only. They are not to be understood as a guarantee of quality or durability.

托驰（上海）工业传感器有限公司
上海市嘉定区华江路348号1号楼707室
电话：+86 021 51069888
传真：+86 021 51069009
邮箱：zhang@yanatoo.com
网址：www.sensor-hbm.com

measure and predict with confidence

