

C4

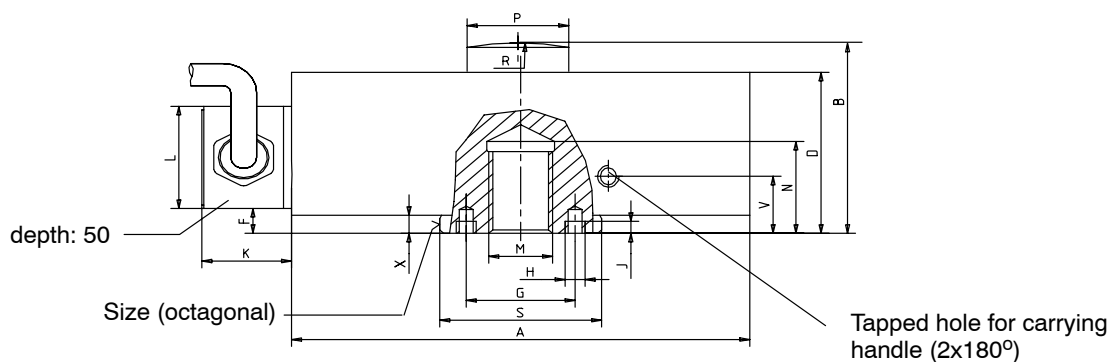
Force Standard



Special features

- Nominal forces 20 kN ... 500 kN
- Classification option by device classes with DKD calibration certificate according to ISO 376
- Good long-term stability

Dimensions (in mm; 1 mm= 0.03937 inches)



Type	Ø A	B	D	F	G	H	J	M	N	R	Ø S _{f7}	V	X	a.f.	K	L	Ø P-0.1
C4/20 kN	115	54.5	47	7.3				M16	27	60	40		5.3	38			25
C4/50 kN	120	60.2	55	10.2	-	-	-	M20x1.5	28	160	48		8.2	45	22	30	26
C4/100 kN	146	74.2	69	12.2				M30x2	37	300	62		10.2	59			40
C4/200 kN	180	94.2	89	13.1	68	M6	6	M39x2	45	300	76		11.1	73			50
C4/500 kN	275	159	145	21	118	M8	8	M72x4	87	400	140	35	20	134	32	43	64

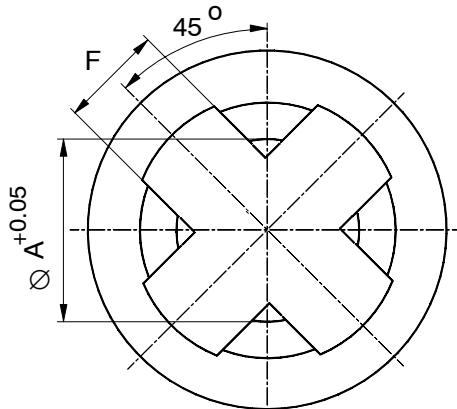
Specifications

Type	C4						
Data according to VDI standards 2638							
Nominal force	F_{nom}	kN	20	50	100	200	500
possible classification according to ISO 376 in conjunction with DKD calibration certificate			0.5				1
Nominal sensitivity	C_{nom}	mV/V	2				
rel. sensitivity deviation	d_c	%	0.1				
zero signal tolerance	$d_{s,0}$	%	0.5				
rel. zero point compensation (zero signal return)	f_o	%	< ±0.02				
Rel. range (0.2 F_{nom} to F_{nom}) at: unchanged mounting position, typically	b_{rg}	%	0.02				
different mounting positions, typically	b_{rv}	%	0.03				
Hysteresis (0.2 F_{nom} to F_{nom})	u	%	0.1				0.3
Linearity deviation	d_{lin}	%	0.02				0.03
Effect of temperature on sensitivity/10 K by reference to nominal sensitivity	TK_c	%	0.01				
Effect of temperature on zero signal/10 K by reference to nominal sensitivity	TK_0	%	0.015				
Effect of transverse forces (Transverse forces 10 % F_{nom}) ¹⁾	d_Q	%	0.03				
Effect of eccentricity per mm	d_E	%	0.01	0.005			
Ambient pressure influence on zero signal per 10mBar	p_{KQ}	%	0.015	0.006	0.004	0.002	0.001
Rel. creep over 30 min	d_{crF+E}	%	0.02				
Input resistance	R_e	Ω	>345				
Output resistance	R_a	Ω	356 ± 0.3				
Isolation resistance	R_{is}	Ω	>5·10 ⁹				
Reference excitation voltage	V_{ref}	V	5				
Operating range of the excitation voltage	$B_{U,G}$	V	0.5 ... 12				
Nominal temperature range	$B_{t,nom}$	°C	+10...+40				
Operating temperature range	$B_{t,G}$	°C	-30...+85				
Storage temperature range	$B_{t,S}$	°C	-50...+85				
Reference temperature	t_{ref}	°C	+23				
Max. operational force	(F_G)	%	150				
Limit force	(F_L)	%	150				
Breaking force	(F_B)	%	250				
Static lateral limit force	(F_Q)	%	30				
Nominal displacement	S_{nom}	mm	0.2		0.25	0.28	0.45
Fundamental resonance frequency	f_G	kHz	4.1	4.5	3.4	3.6	2.5
Weight		kg	1.8	2.4	5.5	11.2	42
Rel. permissible vibrational stress	F_{rb}	%	70				50
Cable length, six-wire connection		m	6				
Degree of protection to DIN EN 60529			IP67				

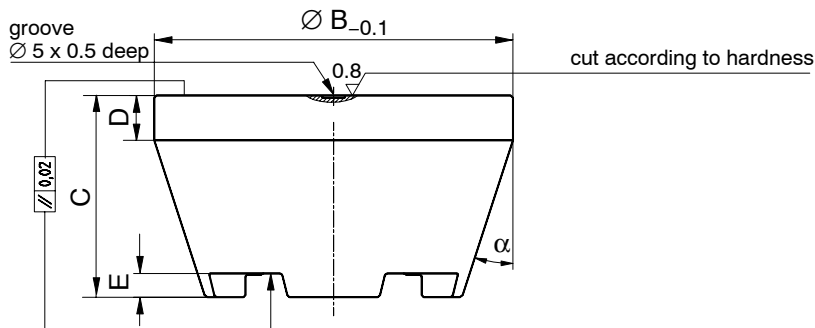
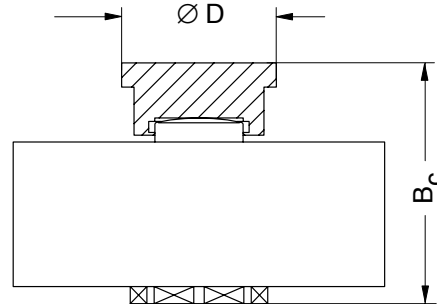
¹⁾ corresponds to load introduction point

Accessories

EDO3 for precision measurements, acc. to ISO 376



EPO3 for standard measurements in industry



EDO3 thrust piece

Type	Thrust piece	Weight [kg]	$\varnothing A$	$\varnothing B$	C	D	E	F	α
C4/20 kN	EDO3/20 kN	0.34	25.2	48	27	8	3	12	18°
C4/50 kN	EDO3/50 kN		26.2		27		3		
C4/100 kN	EDO3/100 kN	1.58	40.2	80	45	10	5	23	
C4/200 kN	EDO3/200 kN		50.2						
C4/500 kN	EDO3/500 kN	4.35	64.2	112	62	15	6	30	15°

EPO3 thrust piece

Type	Thrust piece	Weight [kg]	B_C	$\varnothing D$
C4/20 kN	EPO3/5 T	0.10	70	45
C4/50 kN	EPO4/50 kN	0.18	75	45
C4/100 kN	EPO4/100 kN	0.40	109.5	90
C4/200 kN	EPO4/200 kN	1.26	129	90
C4/500 kN	EPO3/100 T	5.80	214	90

Pin assignment

Six-wire connection



Cable shielding, connected to housing

Modifications reserved.

All details describe our products in general form only. They are not to be understood as express warranty and do not constitute any liability whatsoever.

B0663-2.3 en

托驰（上海）工业传感器有限公司
上海市嘉定区华江路348号1号楼707室
电话: +86 021 51069888
传真: +86 021 51069009
邮箱: zhang@yanatoo.com
网址: www.sensor-hbm.com



measurement with confidence